



7500 Bergenline
Avenue
NORTH BERGEN, NJ

FOR SALE/LEASE

7,200 SF
Medical Office Building



Property Features

- 7,200 SF medical office building
- 4,924 SF medical office space available
- 2,267 SF on lower level
- 2,279 SF on ground floor
- Elevator in building
- Each office includes private offices, exam rooms with sinks, restrooms, reception and waiting area
- High visibility
- Close proximity to major hospitals and healthcare facilities
- Easily accessible via public transportation & major highways
- Strong local patient base in a bustling medical district

FOR MORE INFORMATION

Darren Lizzack, MSRE | Vice President
P: 201.488.5800 x104 | dlizzack@naihanson.com

Randy Horning, SIOR, MSRE | Vice President
P: 201.488.5800 x123 | rhoring@naihanson.com



FOLLOW US: [f](#) [@](#) [X](#) [in](#) [v](#) | Offices: Teterboro | Parsippany | Allentown • naihanson.com | naisummit.com • Member of NAI Global with 325+ Offices Worldwide

SERVICES OFFERED

Brokerage • Property Management • Corporate Services • Financing • Tenant Representation • Cold Storage • Investment Services

THE INFORMATION CONTAINED HEREIN HAS BEEN OBTAINED FROM SOURCES CONSIDERED TO BE RELIABLE, BUT NO GUARANTEE OF ITS ACCURACY IS MADE BY NAI JAMES E. HANSON



7500 Bergenline Avenue NORTH BERGEN, NJ

LOCATION INSIGHTS



Prime Medical Office Location

Establish your practice in a thriving medical hub with a built-in patient base and all the amenities needed to support a successful healthcare operation.

Location Description

Situated in the heart of North Bergen's bustling medical district, Riverside Medical Group offers unparalleled convenience for healthcare professionals. Located on Bergenline Avenue, one of the area's most active commercial corridors, this property ensures high visibility and easy access for both patients and staff.

The building is just minutes from Hackensack Meridian Health Palisades Medical Center and other major healthcare facilities, making it an ideal location for physicians, specialists, and medical practitioners seeking a well-connected and patient-friendly environment.

With close proximity to Route 495, Route 3, and the NJ Turnpike, as well as public transportation options within walking distance, the property provides seamless accessibility for patients traveling from surrounding communities, including West New York, Union City, and Guttenberg.





7500 Bergenline Avenue
NORTH BERGEN, NJ

PROPERTY PHOTOS





7500 Bergenline
Avenue
NORTH BERGEN, NJ

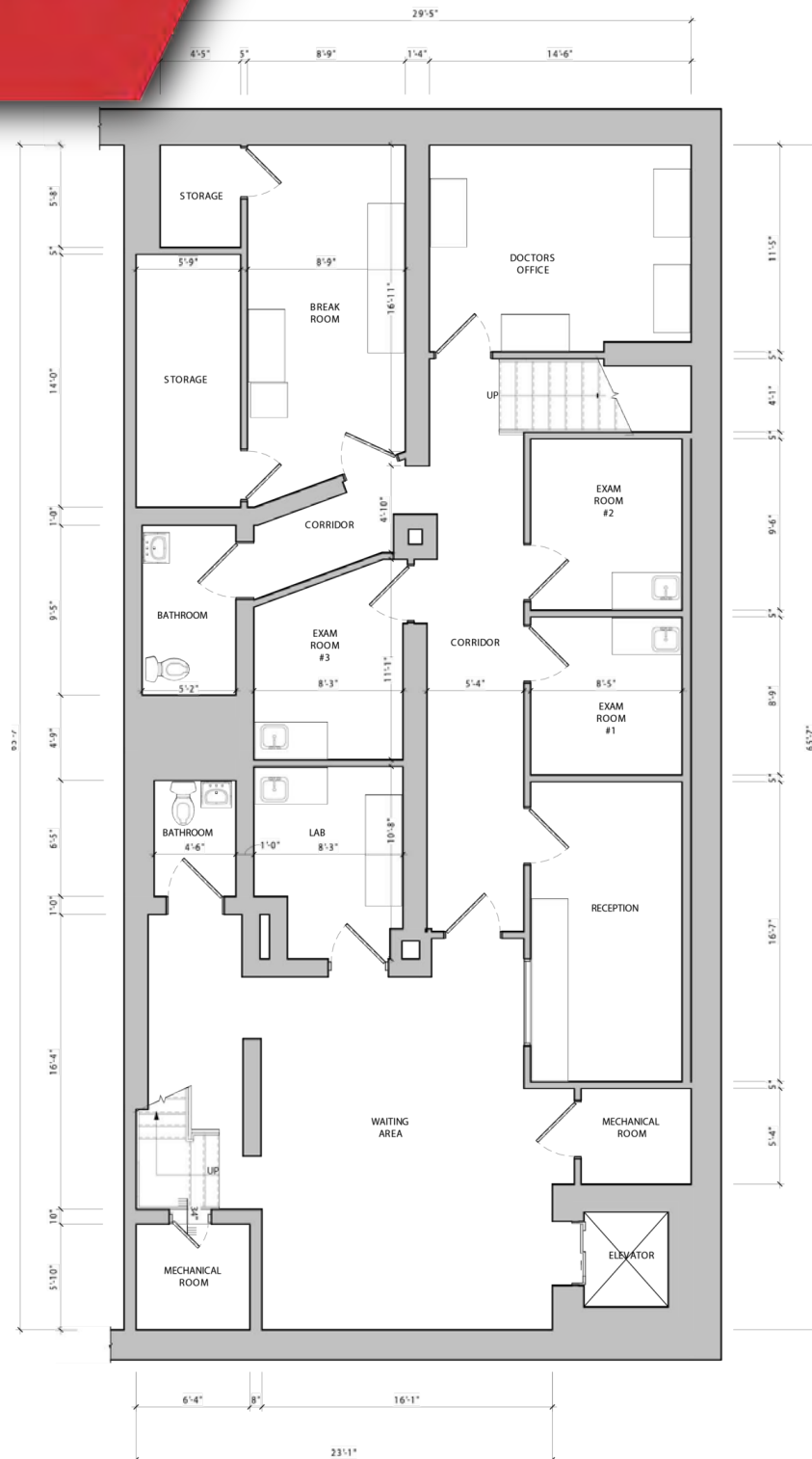
PROPERTY PHOTOS





7500 Bergenline
Avenue
NORTH BERGEN, NJ

LOWER
LEVEL: 2,267 SF



1
A-100 EXISTING PROFESSIONAL OFFICE CONDITIONS- LOWER LEVEL
SCALE: 1/4" = 1'-0"

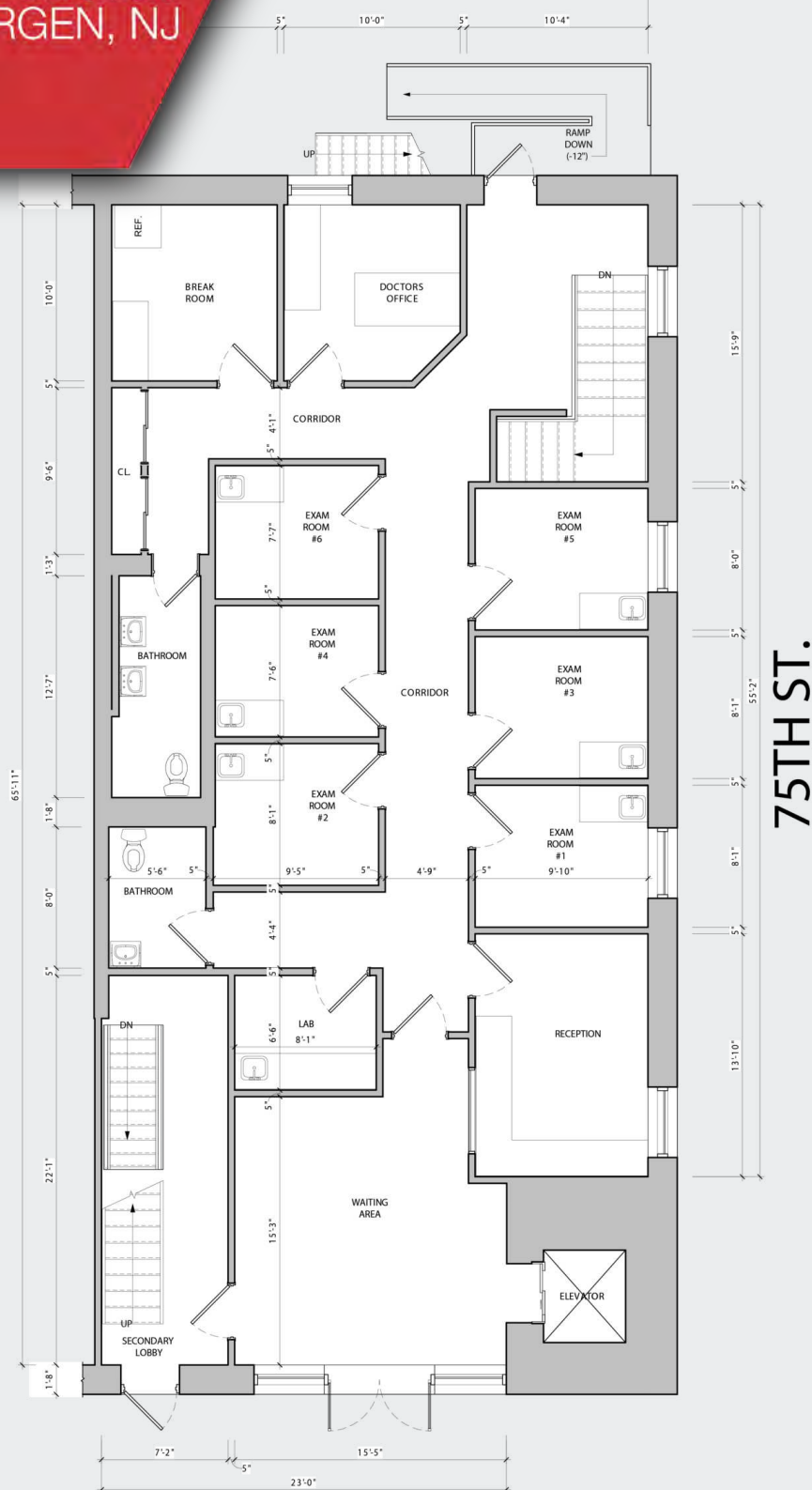
NAI James E. Hanson
COMMERCIAL REAL ESTATE SERVICES. WORLDWIDE

The information contained herein has been obtained from sources considered to be reliable, but no guarantee of its accuracy is made by NAI James E. Hanson



7500 Bergenline
Avenue
NORTH BERGEN, NJ

GROUND FLOOR: 2,279 SF



BERGENLINE AVENUE

2 EXISTING PROFESSIONAL OFFICE CONDITIONS-GROUND FLOOR
A-100 SCALE: 1/4" = 1'-0"

NAI James E. Hanson
COMMERCIAL REAL ESTATE SERVICES, WORLDWIDE

The information contained herein has been obtained from sources considered to be reliable, but no guarantee of its accuracy is made by NAI James E. Hanson



7500 Bergenline Avenue
NORTH BERGEN, NJ

REGIONAL MAP

