



Property Features

- 5,545 SF available on second floor
- Two-story building consisting of 10,788 SF
- Professional and/or medical use permitted
- On-site and off-street parking
- Available immediately



FOR MORE INFORMATION

Darren Lizzack, MSRE | Vice President
P: 201.488.5800 x104 | dlizzack@naihanson.com

Randy Horning, MSRE | Vice President
P: 201.488.5800 x123 | rhorning@naihanson.com



FOLLOW US: [f](#) [@](#) [X](#) [in](#) [v](#) | NJ Offices: Teterboro | Parsippany | naihanson.com | Member of NAI Global with 325+ Offices Worldwide

SERVICES OFFERED

Brokerage • Property Management • Corporate Services • Financing • Logistics • Government Services • Healthcare • Tenant Representation • Cold Storage • Investment Services

The information contained herein has been obtained from sources considered to be reliable, but no guarantee of its accuracy is made by NAI James E. Hanson



Location Description

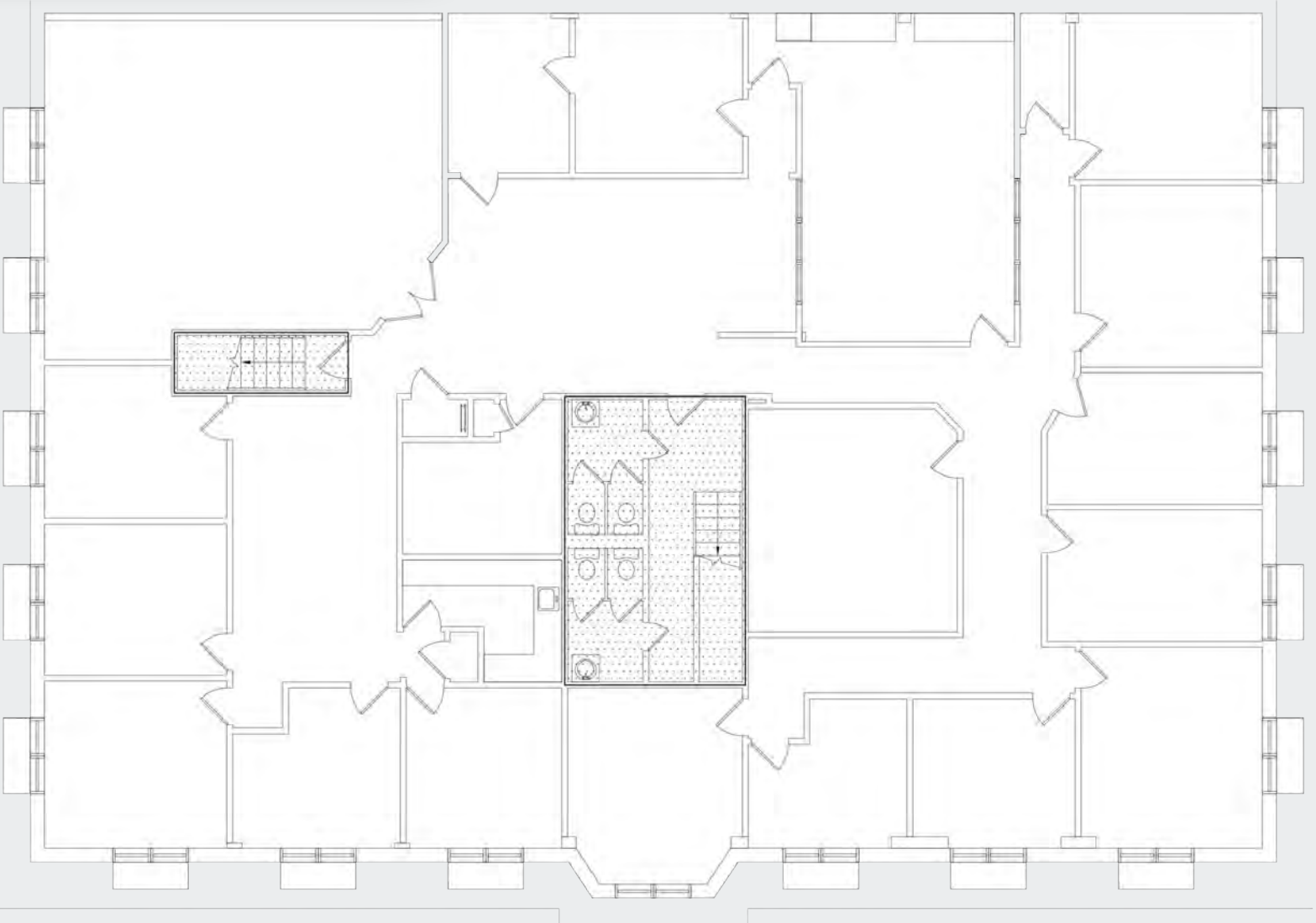
Located in the vibrant and highly desirable Ridgewood area, 615 Franklin Turnpike offers prime visibility and easy access to major roadways, including Route 17 and the Garden State Parkway. This well-connected location is perfect for businesses seeking an office or medical space, providing proximity to a diverse clientele and the area's thriving commercial activity. Just minutes from downtown Ridgewood, tenants will benefit from a wide range of nearby amenities, including restaurants, retail shops, and professional services.

Offering Summary

For Sale/Lease	Inquire for Pricing
Available SF:	5,545 SF
Building Size:	10,788 SF

Demographics 1 Mile 3 Miles 5 Miles

Total Households	3,414	30,430	96,073
Total Population	10,922	89,956	277,305
Average HH Income	\$277,387	\$231,270	\$204,369



EGRESS PLAN- SECOND FLOOR

SCALE: 1/8"=1'-0"

615 Franklin
Turnpike
Ridgewood, New Jersey



ADDITIONAL PHOTOS

