

1027
Pompton
Avenue
CEDAR GROVE
NEW JERSEY



7,500 SF
MEDICAL/PROFESSIONAL BUILDING
For Sale/Lease



Property Features

- 7,500 SF freestanding building
- Two (2) floors
- 3,500 SF - entire 2nd floor available for lease
- Second floor space previously an OB/GYN office
- First floor is currently occupied by Columbia Bank
- Move-in condition
- Next door to CVS
- Frontage on busy Route 23 at a lighted intersection



FOR MORE INFORMATION

Darren Lizzack, MSRE | Vice President
P: 201.488.5800 x104 | dlizzack@naihanson.com

Randy Horning, SIOR, MSRE | Vice President
P: 201.488.5800 x123 | rhoring@naihanson.com

NAI James E. Hanson
COMMERCIAL REAL ESTATE SERVICES, WORLDWIDE

FOLLOW US: [f](#) [@](#) [X](#) [in](#) [v](#) | Offices: Teterboro | Parsippany | Allentown • naihanson.com | naisummit.com • Member of NAI Global with 325+ Offices Worldwide

SERVICES OFFERED

Brokerage • Property Management • Corporate Services • Financing • Tenant Representation • Cold Storage • Investment Services

THE INFORMATION CONTAINED HEREIN HAS BEEN OBTAINED FROM SOURCES CONSIDERED TO BE RELIABLE, BUT NO GUARANTEE OF ITS ACCURACY IS MADE BY NAI JAMES E. HANSON

1027 Pompton Avenue

CEGAR GROVE
NEW JERSEY



PROPERTY SUMMARY



Inquire For Pricing

Sale Price:	Call for Pricing
Total Available:	7,500 SF
Floors:	2
Available for Lease:	2nd floor at 3,500 SF
Parking:	Ample



Demographics 1 Mile 3 Miles 5 Miles

Total Population	9,605	94,448	405,581
Average HH Income	\$184,873	\$192,567	\$145,214
Average Age	45	43	40

Avenue

CEDAR GROVE
NEW JERSEY

The information contained herein has been obtained from sources considered to be reliable, but no guarantee of its accuracy is made by NAI James E. Hanson

1027 Pompton Avenue

CEGAR GROVE
NEW JERSEY

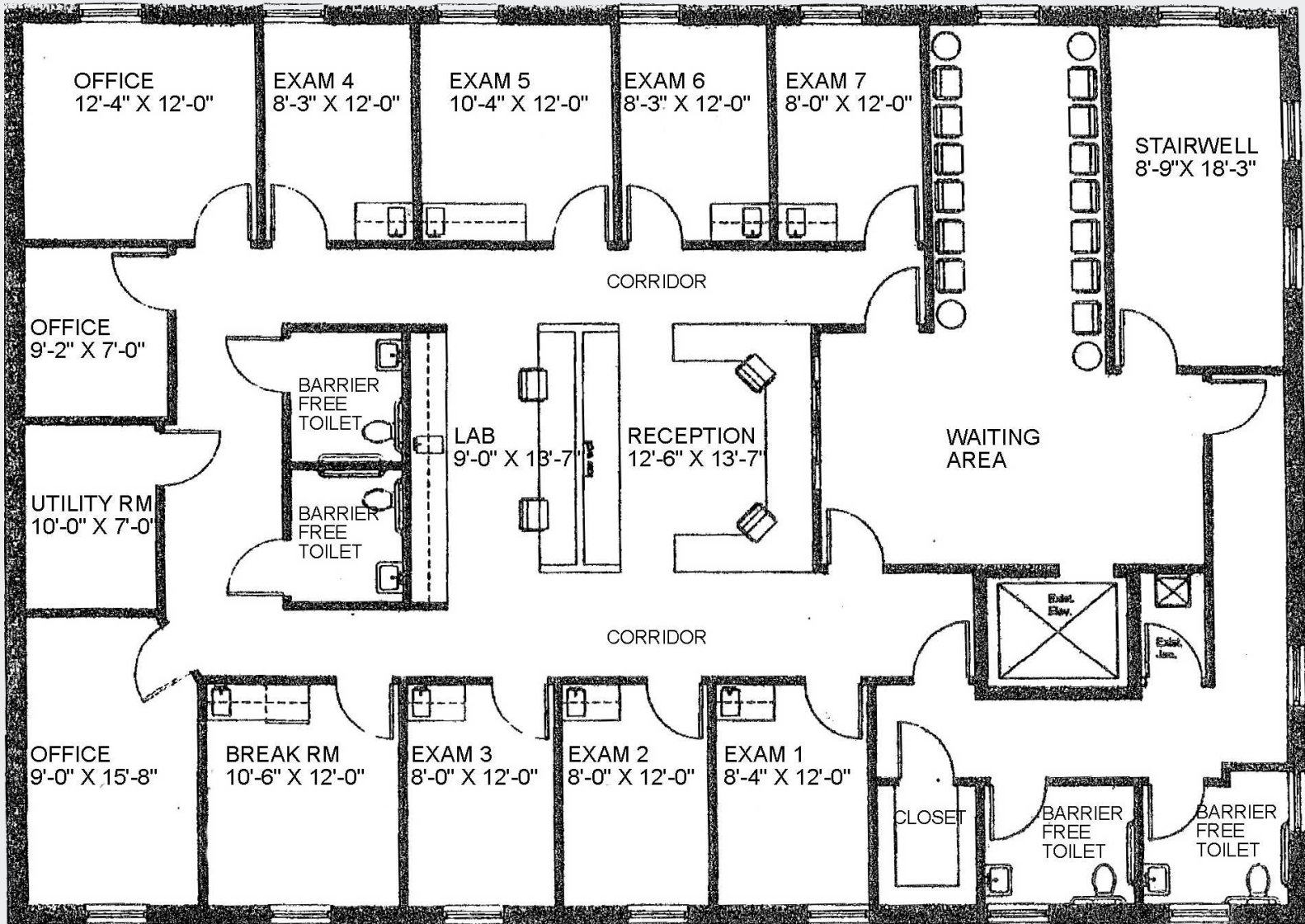


PHOTOS





FLOOR PLAN



2nd Floor Space: 3,500 SF