

# 80 Industrial Road

LODI, NEW JERSEY

COMPANY  
NAME HERE



## 2,250 SF Sublease OFFICE/WAREHOUSE *Long-Term Lease Available*



- Flex (office/warehouse) building with one (1) unit available
- 2,250 SF located on the ground floor with a private entrance
- Former Use: Dental laboratory
- One (1) overhead door and five (5) dedicated parking spaces included in asking rent; additional parking available
- 63,635 SF flex building on a 3.27 acre lot
- Immediate access to Route 17, I-80, and US-46 with convenient access to Garden State Parkway, I-95 and Route 21

**Darren M. Lizzack, MSRE**  
Vice President






201 488 5800 x104  
dlizzack@naihanson.com



**Randy Horning, MSRE**  
Vice President

201 488 5800 x123  
rhorning@naihanson.com

**NAI James E. Hanson**  
COMMERCIAL REAL ESTATE SERVICES, WORLDWIDE

FOLLOW US!      | NJ Offices: Teterboro | Parsippany | [naihanson.com](http://naihanson.com) | Member of NAI Global with 300+ Offices Worldwide

#### SERVICES OFFERED

Brokerage • Property Management • Corporate Services • Financing • Logistics • Government Services • Healthcare • Tenant Representation • Cold Storage • Investment Services

The information contained herein has been obtained from sources considered to be reliable, but no guarantee of its accuracy is made by NAI James E. Hanson



# 80 Industrial Road

LODI, NEW JERSEY

## Property PHOTOS

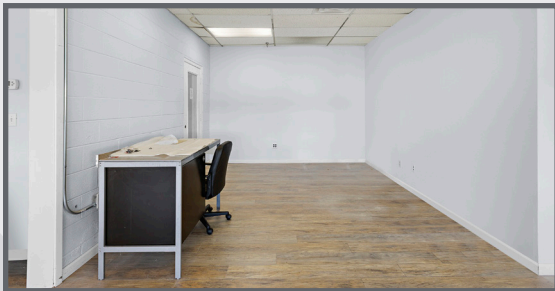




# 80 Industrial Road

LODI, NEW JERSEY

## Property PHOTOS

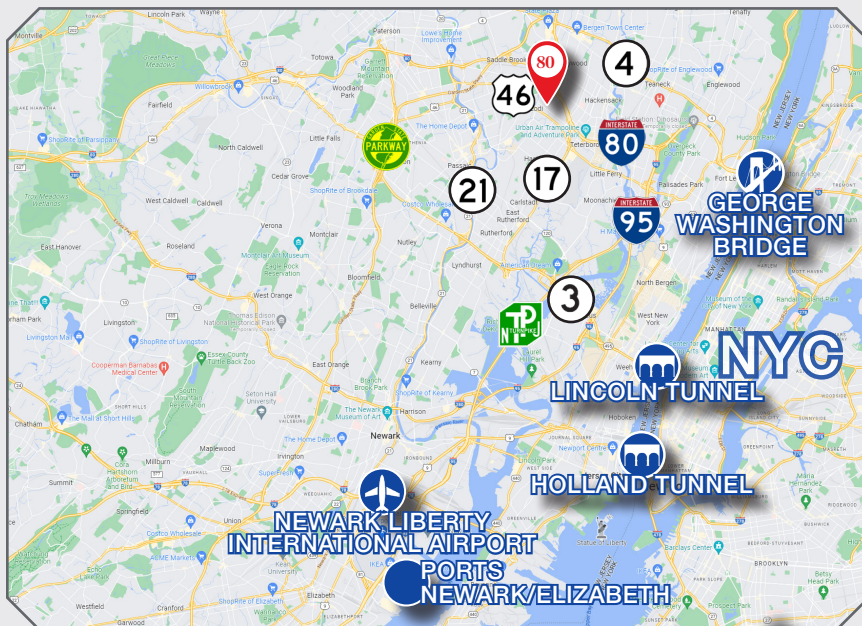
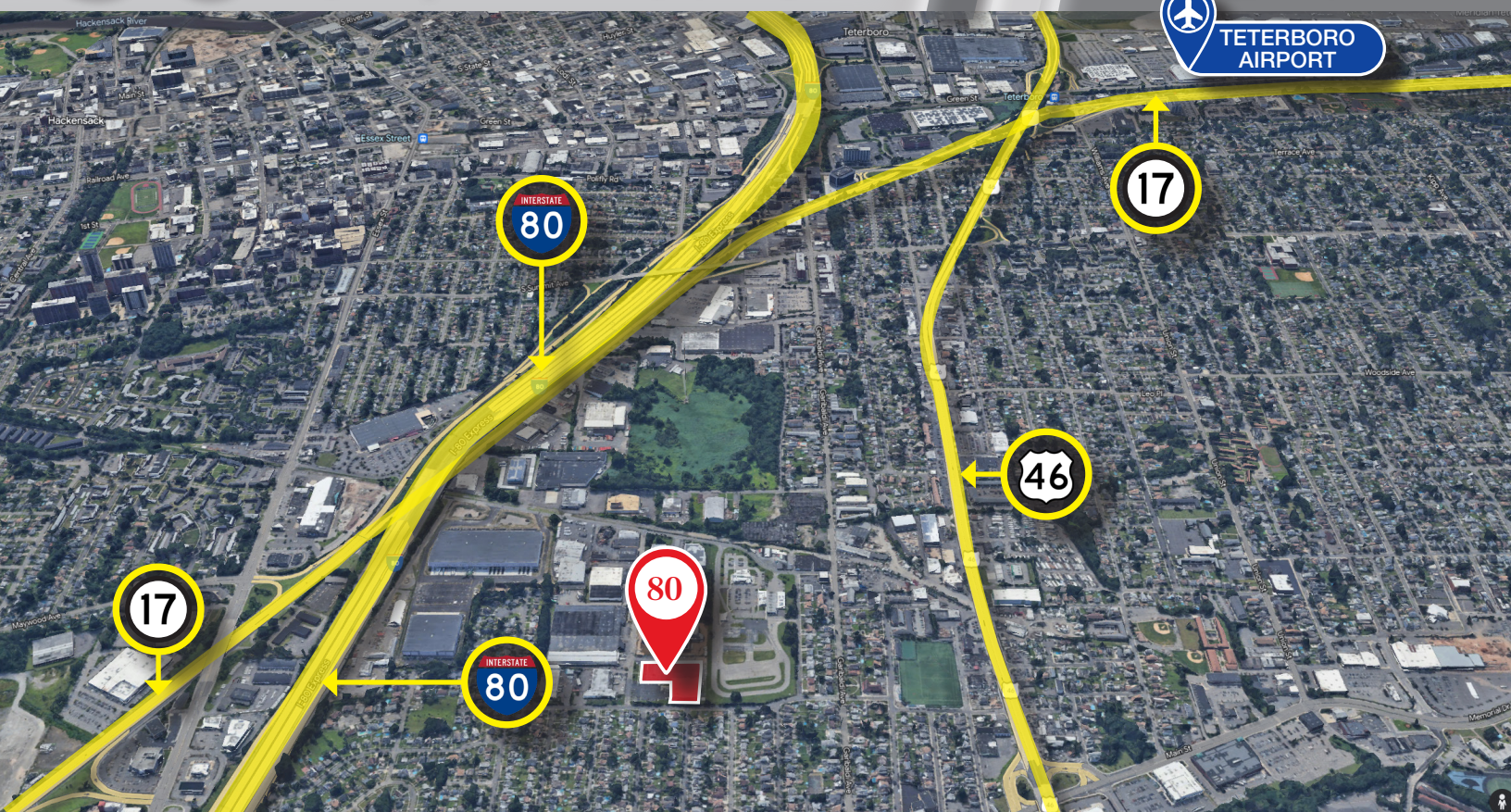




# 80 Industrial Road

LODI, NEW JERSEY

# Aerial & MAP



## DRIVING DISTANCE (MILES)

LINCOLN TUNNEL	13.2
HOLLAND TUNNEL	15.6
GEORGE WASHINGTON BRIDGE	10.2
MANHATTAN	16.2
PORT ELIZABETH/NEWARK	23.0
NEWARK AIRPORT	22.1
TETERBORO AIRPORT	2.5

**Darren M. Lizzack, MSRE**  
Vice President

201 488 5800 x104  
dlizzack@naihanson.com



**Randy Horning, MSRE**  
Vice President

201 488 5800 x123  
rhorning@naihanson.com

**NAI James E. Hanson**  
COMMERCIAL REAL ESTATE SERVICES, WORLDWIDE

The information contained herein has been obtained from sources considered to be reliable, but no guarantee of its accuracy is made by NAI James E. Hanson