

575 Corporate Drive
Mahwah, New Jersey

FOR LEASE
2,398 SF - 24,103 SF
OFFICE | MEDICAL



Property Information

Building Size: 144,570 SF
Available Space: 24,103 SF Office/Medical
Ceiling Height: 24' clear throughout
Highway Access: Easy access to Route 17, US-202, I-287 & I-87
Nearby Amenities: Retail shops, eateries and more
Transportation: NJ Transit rail service available from Mahwah station & Short Line Bus offers service to the Port Authority Bus Terminal

Office Available

- Unit 510: 6,542 SF Office/Medical **Sublease (Exp: 2/28/33)**
- Unit 520: 2,398 SF Office
- Unit 1103: 5,740 SF Office
- Unit 4202: 3,365 SF Office
- Unit 4208: 6,058 SF Office **(Available Dec. 31, 2025)**

Darren M. Lizzack, MSRE
Vice President






201 488 5800 x104
dlizzack@naihanson.com



Randy Horning, SIOR, MSRE
Vice President

201 488 5800 x123
rhorning@naihanson.com

NAI James E. Hanson
COMMERCIAL REAL ESTATE SERVICES, WORLDWIDE

FOLLOW US!      | Offices: Teterboro | Parsippany | Allentown • naihanson.com | naisummit.com • Member of NAI Global with 325+ Offices Worldwide

SERVICES OFFERED

Brokerage • Property Management • Corporate Services • Financing • Tenant Representation • Cold Storage • Investment Services

The information contained herein has been obtained from sources considered to be reliable, but no guarantee of its accuracy is made by NAI James E. Hanson

575 Corporate Drive
Mahwah, New Jersey

Property
PHOTOS



NAI James E. Hanson
COMMERCIAL REAL ESTATE SERVICES, WORLDWIDE

SERVICES OFFERED

Brokerage • Property Management • Corporate Services • Financing • Tenant Representation • Cold Storage • Investment Services

The information contained herein has been obtained from sources considered to be reliable, but no guarantee of its accuracy is made by NAI James E. Hanson

575 Corporate Drive
Mahwah, New Jersey

Property
PHOTOS



NAI James E. Hanson
COMMERCIAL REAL ESTATE SERVICES, WORLDWIDE

SERVICES OFFERED

Brokerage • Property Management • Corporate Services • Financing • Tenant Representation • Cold Storage • Investment Services

The information contained herein has been obtained from sources considered to be reliable, but no guarantee of its accuracy is made by NAI James E. Hanson

575 Corporate Drive
Mahwah, New Jersey

Property
PHOTOS



NAI James E. Hanson
COMMERCIAL REAL ESTATE SERVICES, WORLDWIDE

SERVICES OFFERED

Brokerage • Property Management • Corporate Services • Financing • Tenant Representation • Cold Storage • Investment Services

The information contained herein has been obtained from sources considered to be reliable, but no guarantee of its accuracy is made by NAI James E. Hanson

Property FLOOR PLANS

Unit 520:
2,398 SF OFFICE

Unit 510 (Sublease)

6,452 SF

GROUP ROOM 485 SF

OFFICE 137 SF

RECEPTION 415 SF

EXISTING VESTIBULE 49 SF

EXISTING STAIRWELL 365 SF

EXISTING K. 43 SF

GROUP ROOM 317 SF

GROUP ROOM 243 SF

LONG OFFICE 233 SF

OFFICE 134 SF

OFFICE 132 SF

OFFICE 124 SF

OFFICE 125 SF

LONG OFFICE 280 SF

OFFICE 131 SF

OFFICE 126 SF

NURSE ROOM 104 SF

WOMEN'S RESTROOM 118 SF

MEN'S RESTROOM 111 SF

OPEN PANTRY 276 SF

OFFICE 129 SF

OFFICE 129 SF

LONG OFFICE 229 SF

1.10

1.8

1.9

1.7

1.11

1.12

1.13

1.14

1.15

1.16

1.17

1.18

1.19

1.20

1.21

1.22

1.23

1.24

1.25

1.26

1.27

1.28

1.29

1.30

1.31

1.32

1.33

1.34

1.35

1.36

1.37

1.38

1.39

1.40

1.41

1.42

1.43

1.44

1.45

1.46

1.47

1.48

1.49

1.50

1.51

1.52

1.53

1.54

1.55

1.56

1.57

1.58

1.59

1.60

1.61

1.62

1.63

1.64

1.65

1.66

1.67

1.68

1.69

1.70

1.71

1.72

1.73

1.74

1.75

1.76

1.77

1.78

1.79

1.80

1.81

1.82

1.83

1.84

1.85

1.86

1.87

1.88

1.89

1.90

1.91

1.92

1.93

1.94

1.95

1.96

1.97

1.98

1.99

2.00

2.01

2.02

2.03

2.04

2.05

2.06

2.07

2.08

2.09

2.10

2.11

2.12

2.13

2.14

2.15

2.16

2.17

2.18

2.19

2.20

2.21

2.22

2.23

2.24

2.25

2.26

2.27

2.28

2.29

2.30

2.31

2.32

2.33

2.34

2.35

2.36

2.37

2.38

2.39

2.40

2.41

2.42

2.43

2.44

2.45

2.46

2.47

2.48

2.49

2.50

2.51

2.52

2.53

2.54

2.55

2.56

2.57

2.58

2.59

2.60

2.61

2.62

2.63

2.64

2.65

2.66

2.67

2.68

2.69

2.70

2.71

2.72

2.73

2.74

2.75

2.76

2.77

2.78

2.79

2.80

2.81

2.82

2.83

2.84

2.85

2.86

2.87

2.88

2.89

2.90

2.91

2.92

2.93

2.94

2.95

2.96

2.97

2.98

2.99

3.00

3.01

3.02

3.03

3.04

3.05

3.06

3.07

3.08

3.09

3.10

3.11

3.12

3.13

3.14

3.15

3.16

3.17

3.18

3.19

3.20

3.21

3.22

3.23

3.24

3.25

3.26

3.27

3.28

3.29

3.30

3.31

3.32

3.33

3.34

3.35

3.36

3.37

3.38

3.39

3.40

3.41

3.42

3.43

3.44

3.45

3.46

3.47

3.48

3.49

3.50

3.51

3.52

3.53

3.54

3.55

3.56

3.57

3.58

3.59

3.60

3.61

3.62

3.63

3.64

3.65

3.66

3.67

3.68

3.69

3.70

3.71

3.72

3.73

3.74

3.75

3.76

3.77

3.78

3.79

3.80

3.81

3.82

3.83

3.84

3.85

3.86

3.87

3.88

3.89

3.90

3.91

3.92

3.93

3.94

3.95

3.96

3.97

3.98

3.99

4.00

4.01

4.02

4.03

4.04

4.05

4.06

4.07

4.08

4.09

4.10

4.11

4.12

4.13

4.14

4.15

4.16

4.17

4.18

4.19

4.20

4.21

4.22

4.23

4.24

4.25

4.26

4.27

4.28

4.29

4.30

4.31

4.32

4.33

4.34

4.35

4.36

4.37

4.38

4.39

4.40

4.41

4.42

4.43

4.44

4.45

4.46

4.47

4.48

4.49

4.50

4.51

4.52

4.53

4.54

4.55

4.56

4.57

4.58

4.59

4.60

4.61

4.62

4.63

4.64

4.65

4.66

4.67

4.68

4.69

4.70

4.71

4.

The floor plan shows a large rectangular building footprint. A specific section in the upper left is outlined in red and labeled "2,398 SF". This section contains a kitchen area labeled "KITCHEN" and several other rooms. To the right of this red-outlined area is a staircase. Below the red-outlined area, there is another staircase and a kitchen area. The lower portion of the plan is labeled "SEIKO AREA: 5,149 SF". The entire plan is overlaid with a dashed grid.

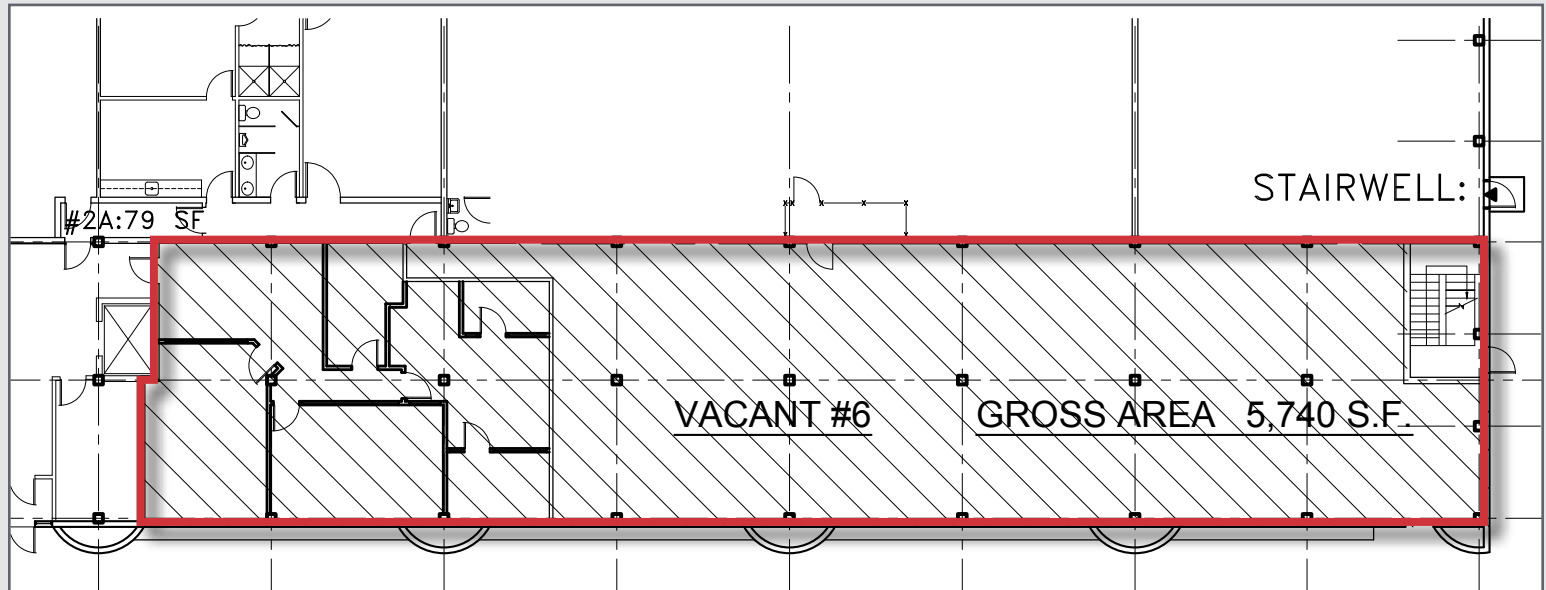


The information contained herein has been obtained from sources considered to be reliable, but no guarantee of its accuracy is made by NAI James E. Hanson

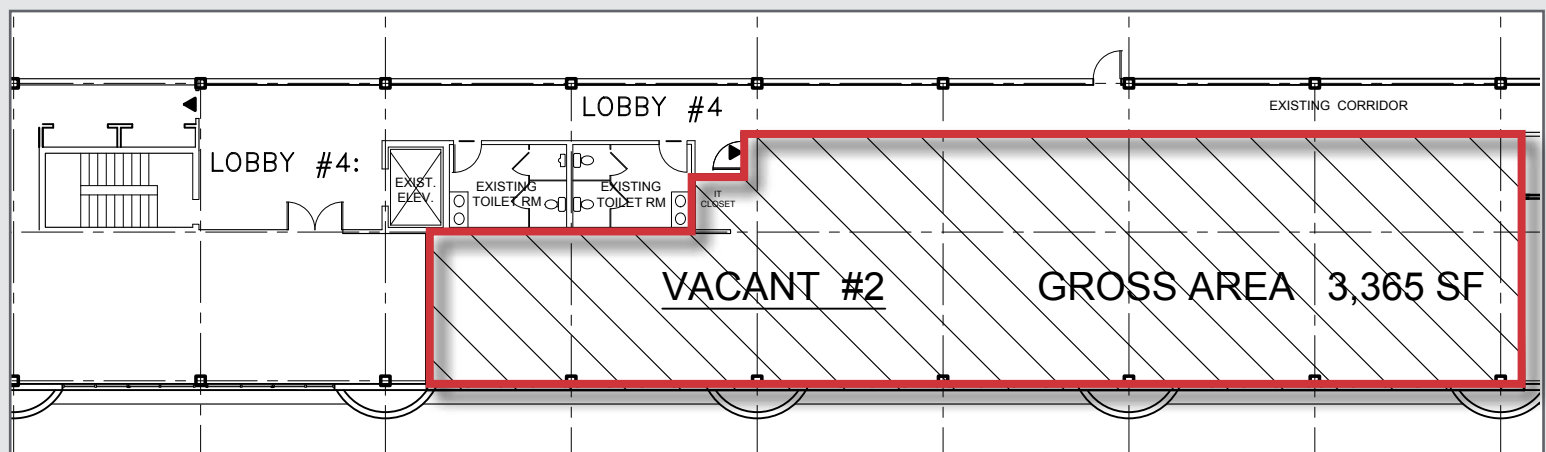
575 Corporate Drive
Mahwah, New Jersey

Available
FLOOR PLANS

Unit 1103: 5,740 SF OFFICE



Unit 4202 3,365 SF OFFICE



NAI James E. Hanson
COMMERCIAL REAL ESTATE SERVICES, WORLDWIDE

SERVICES OFFERED

Brokerage • Property Management • Corporate Services • Financing • Tenant Representation • Cold Storage • Investment Services

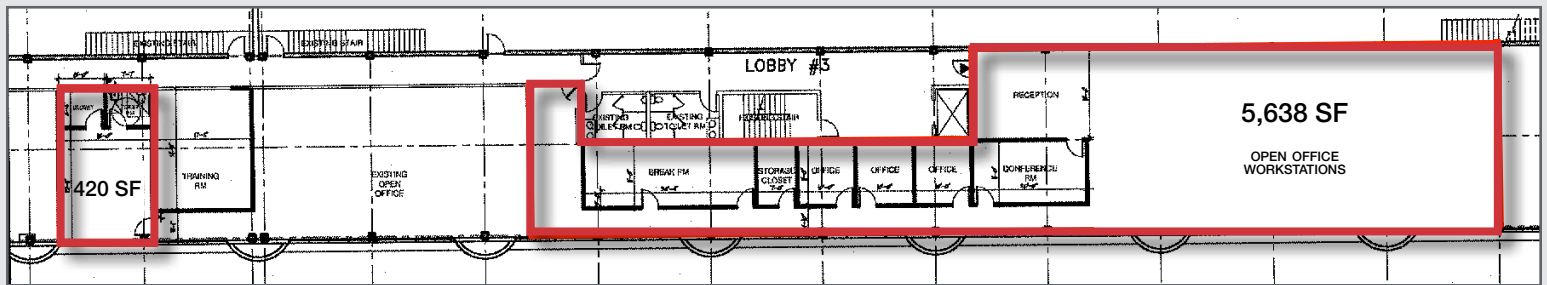
The information contained herein has been obtained from sources considered to be reliable, but no guarantee of its accuracy is made by NAI James E. Hanson

575 Corporate Drive
Mahwah, New Jersey

Available
FLOOR PLANS

Unit 4208 6,058 SF OFFICE

450 SF & 5,638 SF - not contiguous - 450 SF cannot be leased separately.



SERVICES OFFERED

Brokerage • Property Management • Corporate Services • Financing • Tenant Representation • Cold Storage • Investment Services

The information contained herein has been obtained from sources considered to be reliable, but no guarantee of its accuracy is made by NAI James E. Hanson

575 Corporate Drive Mahwah, New Jersey

Aerial & MAP



NAI James E. Hanson
COMMERCIAL REAL ESTATE SERVICES, WORLDWIDE

SERVICES OFFERED

Brokerage • Property Management • Corporate Services • Financing • Tenant Representation • Cold Storage • Investment Services

The information contained herein has been obtained from sources considered to be reliable, but no guarantee of its accuracy is made by NAI James E. Hanson