

575 Corporate Drive
Mahwah, New Jersey

FOR LEASE
4,801 SF
OFFICE/WAREHOUSE



Property Information

Building Size: 144,570 SF
Available Space: 4,801 SF
Space Type: Office, Warehouse, Storage
Highway Access: Easy access to Route 17, US-202, I-287 & I-87
Nearby Amenities: Retail shops, eateries and more
Transportation: NJ Transit rail service available from Mahwah station & Short Line Bus offers service to the Port Authority Bus Terminal

Available Immediately | Vacant

- Unit 3103: 1,035 SF Storage
- Unit 4202: 1,874 SF Office
- Unit 4208: 1,892 SF Office

Darren M. Lizzack, MSRE
Vice President

201 488 5800 x104
dlizzack@naihanson.com



Randy Horning, MSRE
Vice President

201 488 5800 x123
rhorning@naihanson.com

NAI James E. Hanson
COMMERCIAL REAL ESTATE SERVICES, WORLDWIDE

FOLLOW US!      | NJ Offices: Teterboro | Parsippany | naihanson.com | Member of NAI Global with 300 Offices Worldwide

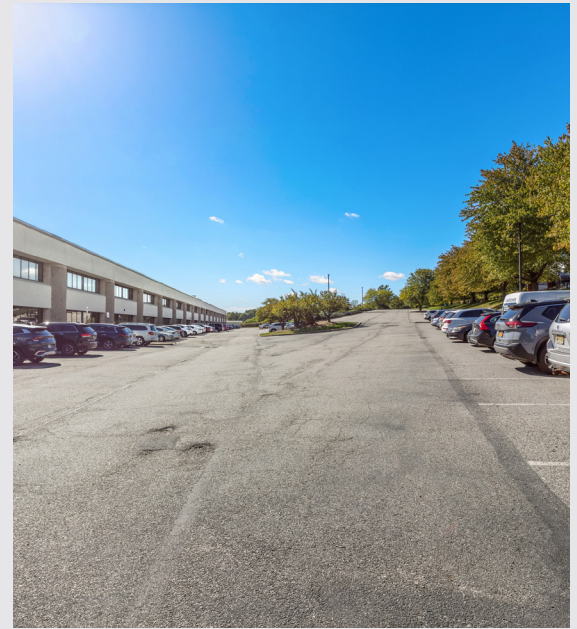
SERVICES OFFERED

Brokerage • Property Management • Corporate Services • Financing • Logistics • Government Services • Healthcare • Tenant Representation • Cold Storage • Investment Services

The information contained herein has been obtained from sources considered to be reliable, but no guarantee of its accuracy is made by NAI James E. Hanson

575 Corporate Drive
Mahwah, New Jersey

Property
PHOTOS



NAI James E. Hanson
COMMERCIAL REAL ESTATE SERVICES, WORLDWIDE

SERVICES OFFERED

Brokerage • Property Management • Corporate Services • Financing • Logistics • Government Services • Healthcare • Tenant Representation • Cold Storage • Investment Services

The information contained herein has been obtained from sources considered to be reliable, but no guarantee of its accuracy is made by NAI James E. Hanson

575 Corporate Drive
Mahwah, New Jersey

Property
PHOTOS



NAI James E. Hanson
COMMERCIAL REAL ESTATE SERVICES, WORLDWIDE

SERVICES OFFERED

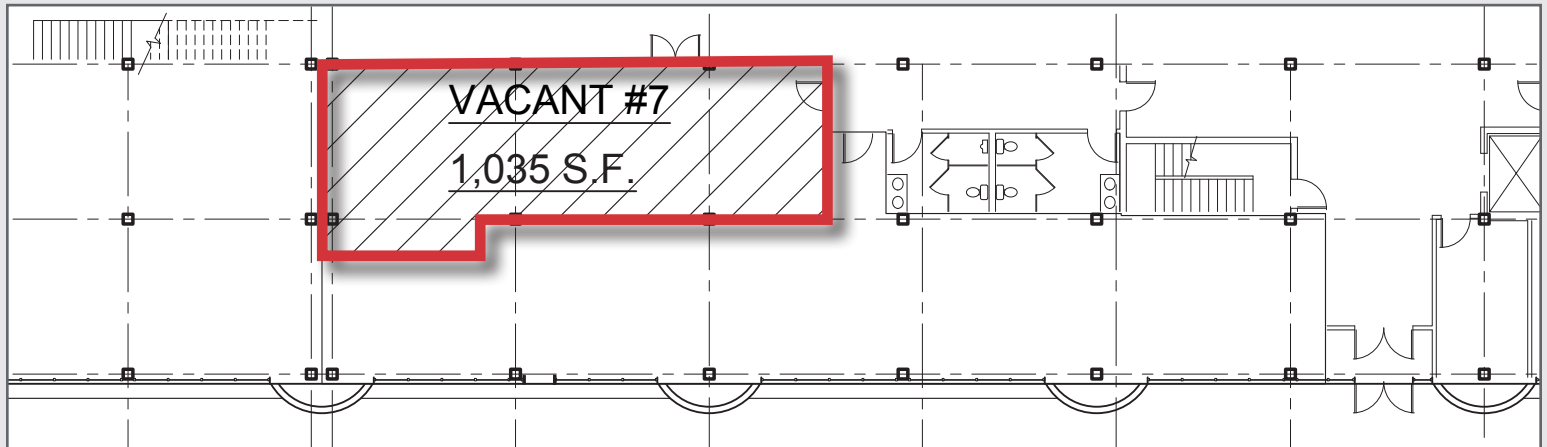
Brokerage • Property Management • Corporate Services • Financing • Logistics • Government Services • Healthcare • Tenant Representation • Cold Storage • Investment Services

The information contained herein has been obtained from sources considered to be reliable, but no guarantee of its accuracy is made by NAI James E. Hanson

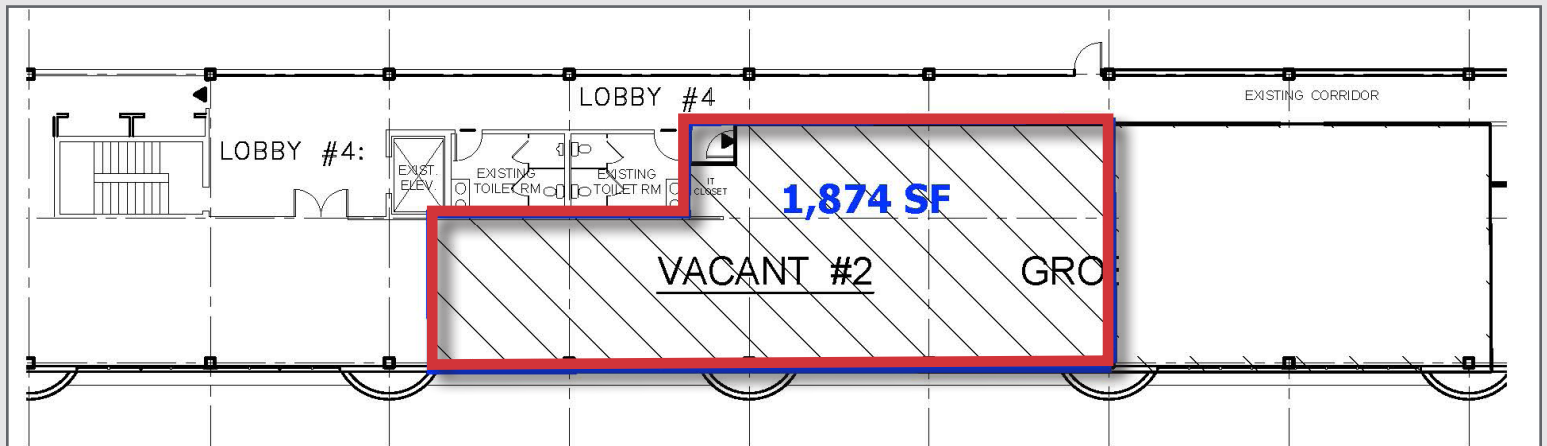
575 Corporate Drive
Mahwah, New Jersey

Property FLOOR PLANS

Unit 3103 1,035 SF OFFICE



Unit 4202 1,874 SF OFFICE



SERVICES OFFERED

Brokerage • Property Management • Corporate Services • Financing • Logistics • Government Services • Healthcare • Tenant Representation • Cold Storage • Investment Services

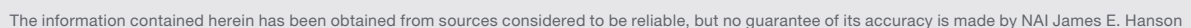
The information contained herein has been obtained from sources considered to be reliable, but no guarantee of its accuracy is made by NAI James E. Hanson

Property FLOOR PLANS

This is a black and white architectural floor plan of a building. The plan shows a central rectangular area, which is highlighted with a thick red border. To the left of this central area is a smaller rectangular room. Above the central area, there are two sets of stairs, each labeled "EXISTING STAIR". To the right of the central area, there is a small room with a door and a window. The plan also shows various walls, doors, and windows throughout the building.

Legend

Architectural floor plan of the second floor. The plan shows a long, narrow building layout. On the left side, there is a large rectangular area outlined in red, which is labeled "EXISTING OPEN OFFICE". To the left of this area is a "TYPING RM" and a "RECS OFFICE". To the right of the red-outlined area is a "LOBBY #3" with a "RECEPTION" area. Further right, there are several "OFFICE" spaces, a "CONFERENCE RM", a "STORAGE CLOSET", and a "WAITING AREA". The plan also shows "ELEVATOR STAIR", "ELECTRIC STAIR", and "ELEVATOR" locations. Dimensions are provided for various rooms, such as "10'-0\"/>



Aerial & MAP



SERVICES OFFERED

The information contained herein has been obtained from sources considered to be reliable, but no guarantee of its accuracy is made by NAI James E. Hanson