

575 Corporate Drive
Mahwah, New Jersey

2,398 SF - 18,881 SF
OFFICE | MEDICAL FOR LEASE



Property Information

Building Size:	144,570 SF
Available Space:	Office Medical Warehouse
Ceiling Height:	24' clear throughout
Highway Access:	Easy access to Route 17, US-202, I-287 & I-87
Nearby Amenities:	Retail shops, eateries and more
Transportation:	NJ Transit rail service available from Mahwah station & Short Line Bus offers service to the Port Authority Bus Terminal

Available Units

• Suite 102:	Lobby 1	5,939 SF
• Unit 101:	Warehouse	4,346 SF
• Suite 3205:	Lobby 3	2,833 SF
• Suite 4205:	Lobby 4	3,365 SF
• Suite 520:	Lobby 5	2,398 SF

For more information or to schedule a tour:

Jessica Curry, CCIM
Associate
201 488 5800 x199
jcurry@naihanson.com

Andrew Somple, SIOR
Senior Vice President
201 488 5800 x151
asomple@naihanson.com






Darren M. Lizzack, MSRE
Principal
201 906 4376
dlizzack@theclinicalgroup.com

Randy Horning, MSRE, SIOR
Principal
201 739 9311
rhorning@theclinicalgroup.com

NAI James E. Hanson
COMMERCIAL REAL ESTATE SERVICES, WORLDWIDE

The **CLINICAL**
Group

 Team
Lizzack-Horning

FOLLOW US!      | Offices: Teterboro | Parsippany | Allentown • naihanson.com | naisummit.com • Member of NAI Global with 325+ Offices Worldwide

SERVICES OFFERED

Brokerage • Property Management • Corporate Services • Financing • Tenant Representation • Cold Storage • Investment Services

The information contained herein has been obtained from sources considered to be reliable, but no guarantee of its accuracy is made by NAI James E. Hanson

575 Corporate Drive
Mahwah, New Jersey

Property
PHOTOS



NAI James E. Hanson
COMMERCIAL REAL ESTATE SERVICES, WORLDWIDE

The CLINICAL
Group

Team
Lizzack-Horning

SERVICES OFFERED

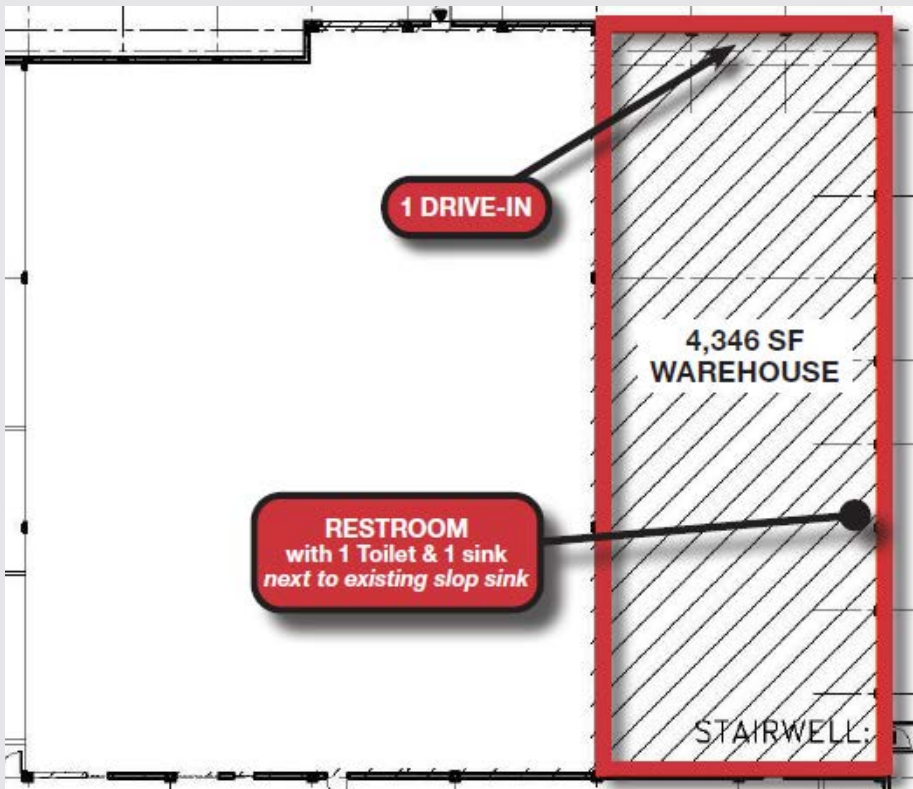
Brokerage • Property Management • Corporate Services • Financing • Tenant Representation • Cold Storage • Investment Services

The information contained herein has been obtained from sources considered to be reliable, but no guarantee of its accuracy is made by NAI James E. Hanson

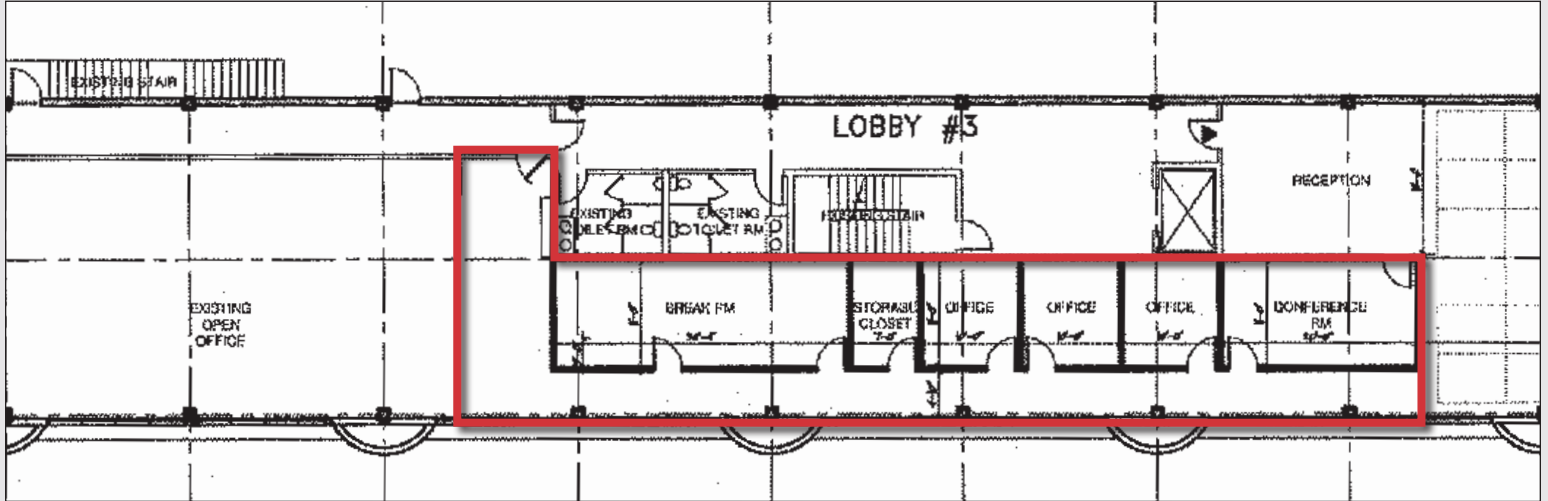
Suite 102: 5,939 SF OFFICE



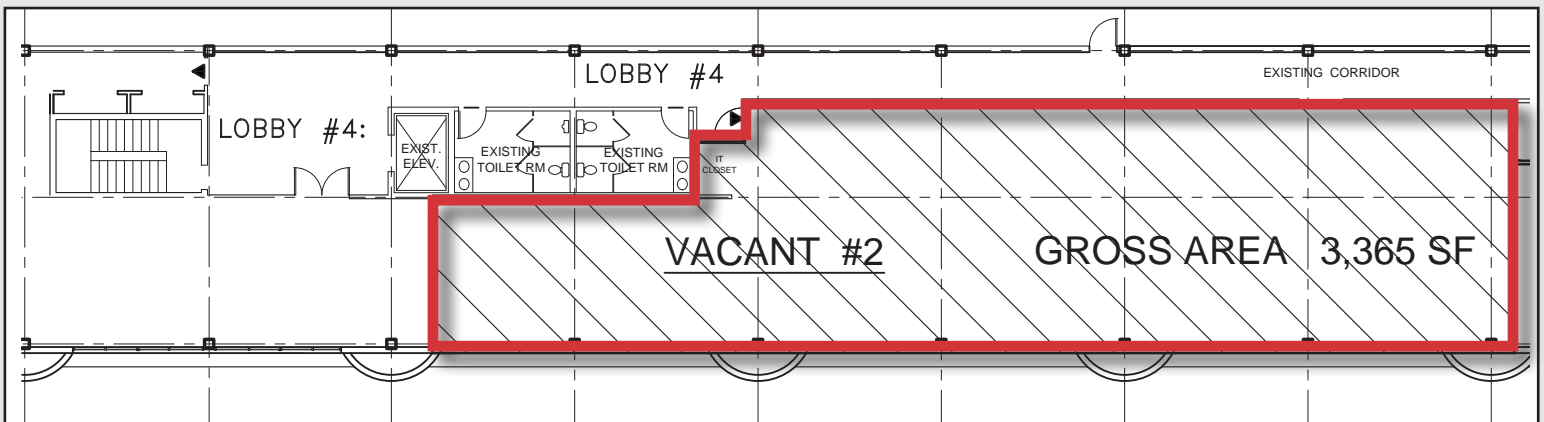
Unit 101: 4,346 SF WAREHOUSE



Suite 3205: 2,833 SF OFFICE



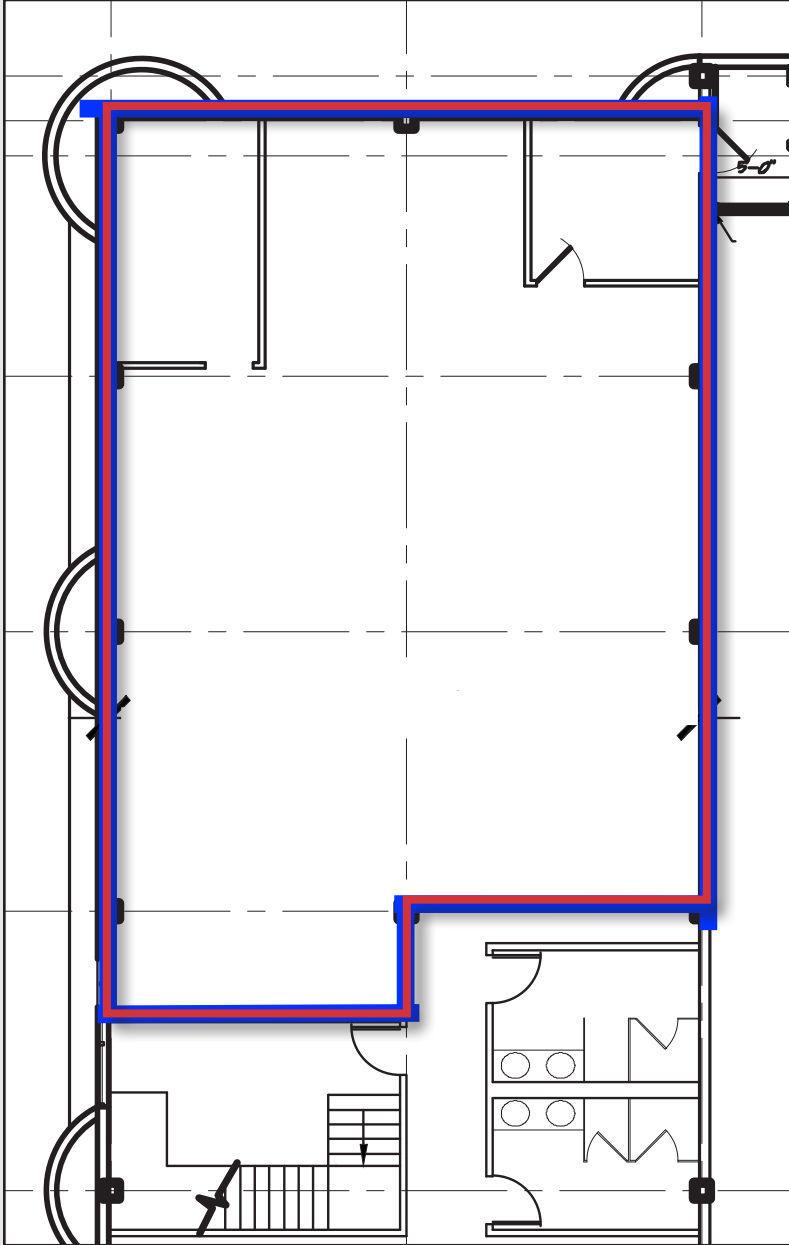
Suite 4205: 3,365 SF OFFICE



575 Corporate Drive
Mahwah, New Jersey

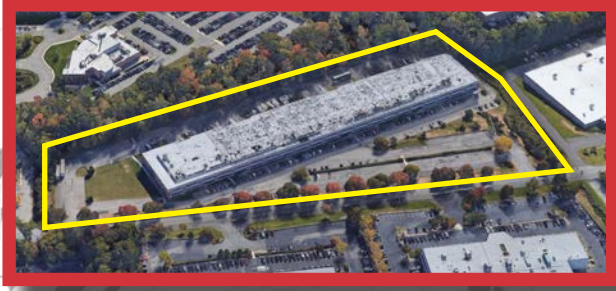
Floor
PLANS

Suite 520: 2,398 SF OFFICE



575 Corporate Drive Mahwah, New Jersey

Aerial & MAP



NAI James E. Hanson
COMMERCIAL REAL ESTATE SERVICES, WORLDWIDE

The CINICAL
Group

Team Lizzack-Horning

SERVICES OFFERED

Brokerage • Property Management • Corporate Services • Financing • Tenant Representation • Cold Storage • Investment Services

The information contained herein has been obtained from sources considered to be reliable, but no guarantee of its accuracy is made by NAI James E. Hanson