

Wayne Medical Center
1777 Hamburg Tpke.
Wayne, New Jersey

TEAM LIZZACK-HORNING

MEDICAL OFFICE SUITES
1,141 SF & 2,351 SF
FOR LEASE



Property Features

- Two medical office suites available
- Suite 205: 2,351 SF
- Suite 303: 1,141 SF
- 30,000 SF medical office building
- Three (3) Story Building with elevators
- Over 200 Parking Spaces
- Janitorial Fee: \$1.50 PSF
- Tenant Electric: \$2.00 PSF








FOR MORE INFORMATION

Darren Lizzack, MSRE | Vice President
P: 201.488.5800 x104 | dlizzack@naihanson.com

Randy Horning, MSRE | Vice President
P: 201.488.5800 x123 | rhorning@naihanson.com

NAI James E. Hanson
COMMERCIAL REAL ESTATE SERVICES, WORLDWIDE

FOLLOW US:      | NJ Offices: Teterboro | Parsippany | naihanson.com | Member of NAI Global with 325+ Offices Worldwide

SERVICES OFFERED

Brokerage • Property Management • Corporate Services • Financing • Logistics • Government Services • Healthcare • Tenant Representation • Cold Storage • Investment Services

The information contained herein has been obtained from sources considered to be reliable, but no guarantee of its accuracy is made by NAI James E. Hanson

Wayne Medical Center 1777 Hamburg Tpke. Wayne, New Jersey

TEAM LIZZACK-HORNING

PROPERTY SUMMARY



Location Description

Located in the heart of Wayne's bustling medical corridor, 1777 Hamburg Turnpike offers unparalleled visibility and accessibility. This prime location is just minutes from major highways, including Route 23, I-80, and I-287, providing seamless connectivity for patients and staff alike.

Nestled amidst a thriving community of healthcare providers, retail amenities, and residential neighborhoods, this property ensures a steady flow of foot traffic and a convenient destination for your practice. Don't miss the opportunity to establish your office in one of Northern New Jersey's most sought-after medical hubs.

Nearby Hospitals

- Valley Medical Group Primary Care (3 mi.)
- St. Joseph's Wayne Hospital (4.3 mi.)
- Chilton Memorial Hospital Pediatric Clinic (4.5 mi.)
- Fresenius Medical Care at Preakness Healthcare (4.5 mi.)
- Chilton Medical Center (6.5 mi.)
- St. Joseph's University Medical Center (8 mi.)

Offering Summary

Suite 205:	2,351 SF
Suite 303:	1,141 SF
Floors:	Three (3)
Building Size:	30,000 SF

Demographics

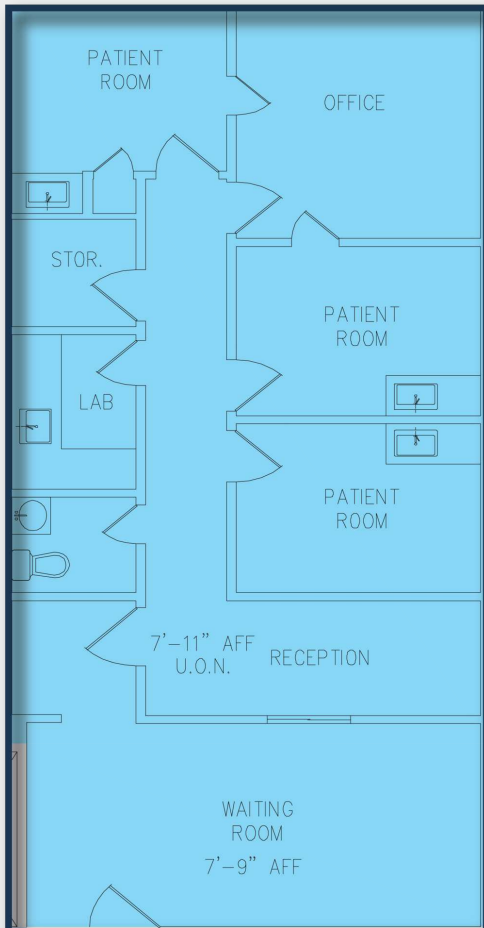
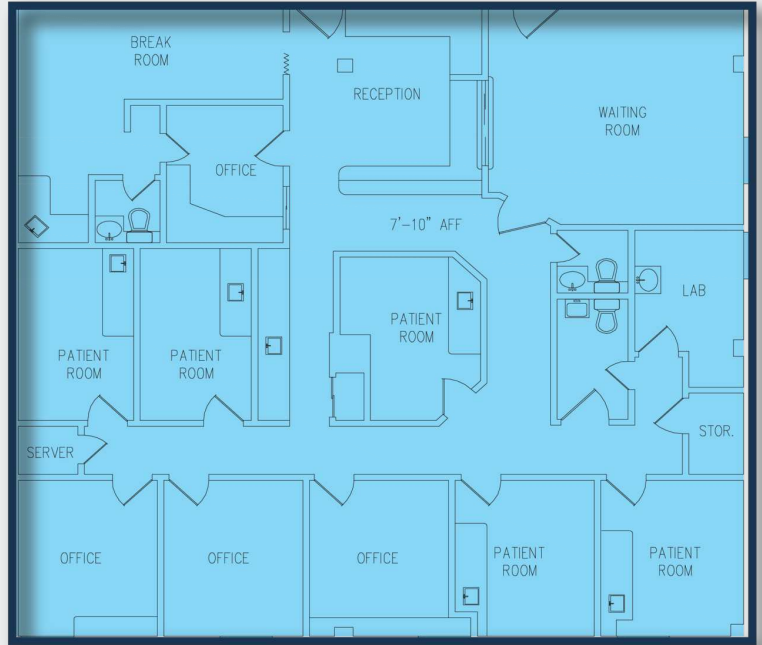
	1 Mile	3 Miles	5 Miles
Total Population	6,826	61,992	163,531
Average HH Income	\$223,717	\$194,339	\$177,045

Wayne Medical Center
1777 Hamburg Tpke.
Wayne, New Jersey

TEAM LIZZACK-HORNING

FLOOR PLANS

Suite 205
2,351 SF

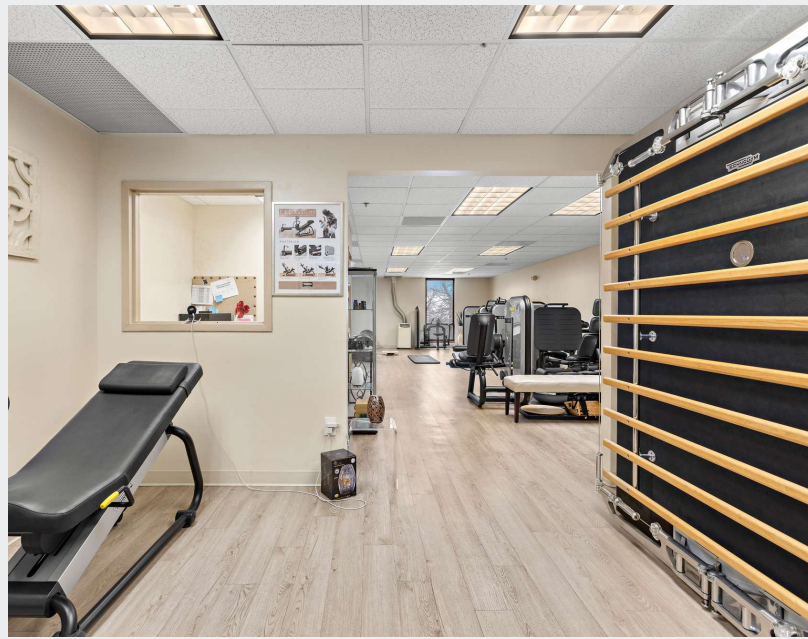


Suite 303
1,141 SF

Wayne Medical Center
1777 Hamburg Tpke.
Wayne, New Jersey

TEAM LIZZACK-HORNING

PHOTOS:
SUITE 303



Wayne Medical Center
1777 Hamburg Tpke.
Wayne, New Jersey

TEAM LIZZACK-HORNING

PHOTOS: SUITE 205



Wayne Medical Center
1777 Hamburg Tpke.
Wayne, New Jersey

TEAM LIZZACK-HORNING

EXTERIOR PHOTOS

