

155

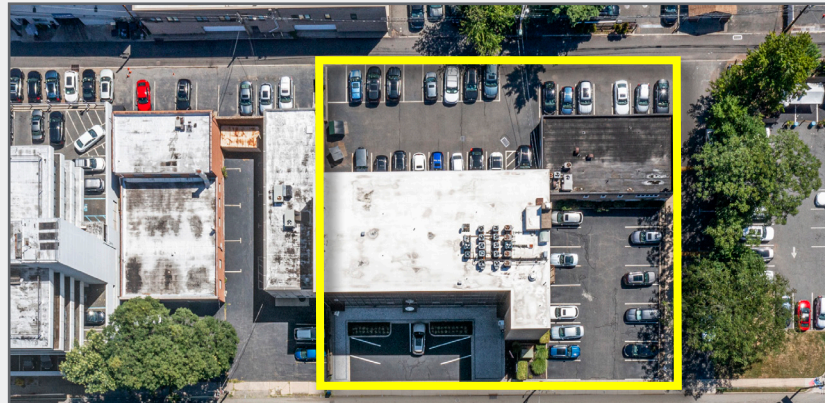
N. Dean Street
ENGLEWOOD, NJ

590± SF MEDICAL OFFICE FOR LEASE



Property Features

- 417 SF - 590 SF available
- 2 floor plan options available
- Total building size: 25,000 SF
- Floors in building: Five (5)
- Modern, elevated building
- Ample on-site parking
- On-site professional management
- Excellent Location!



Walking distance to shopping, dining, banking and more. Easy access to Route 4, I-80 & I-95.






INQUIRE FOR PRICE DETAILS

Darren M. Lizzack, MSRE
Vice President
201 488 5800 x104
dlizzack@naihanson.com



Randy Horning, MSRE
Vice President
201 488 5800 x123
rhorning@naihanson.com

NAI James E. Hanson
COMMERCIAL REAL ESTATE SERVICES, WORLDWIDE

FOLLOW US!      | NJ Offices: Teterboro | Parsippany | naihanson.com | Member of NAI Global with 325+ Offices Worldwide

SERVICES OFFERED

Brokerage • Property Management • Corporate Services • Financing • Logistics • Government Services • Healthcare • Tenant Representation • Cold Storage • Investment Services

The information contained herein has been obtained from sources considered to be reliable, but no guarantee of its accuracy is made by NAI James E. Hanson



**Englewood
Hospital**

155

N. Dean Street
ENGLEWOOD, NJ



Located one block from
Englewood Hospital



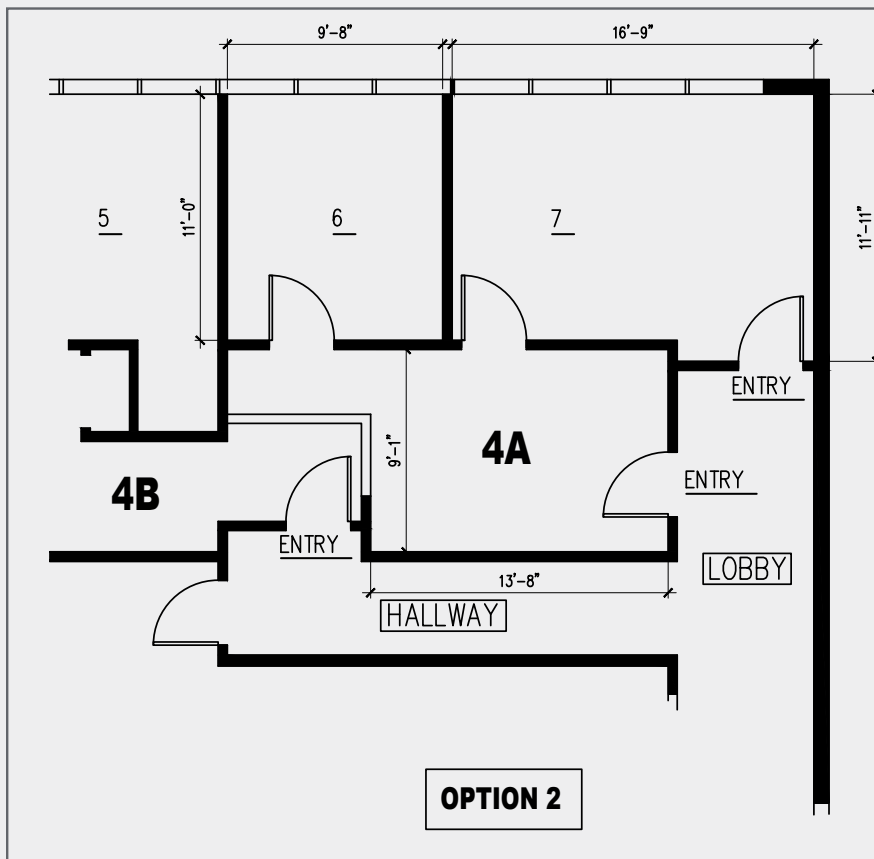
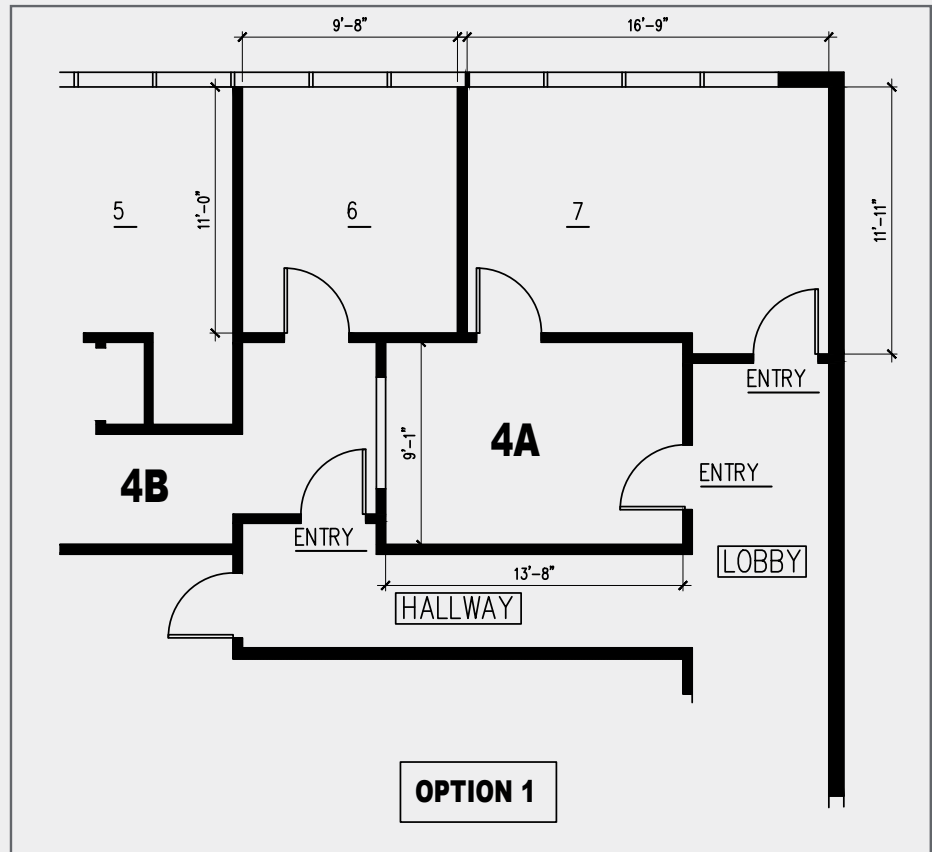
**Surrounding
Hospitals**

155

N. Dean Street
ENGLEWOOD, NJ

FLOOR PLAN OPTIONS

OPTION 1 417 SF



OPTION 2 590 SF

155

N. Dean Street

ENGLEWOOD, NJ

PROPERTY PHOTOS

